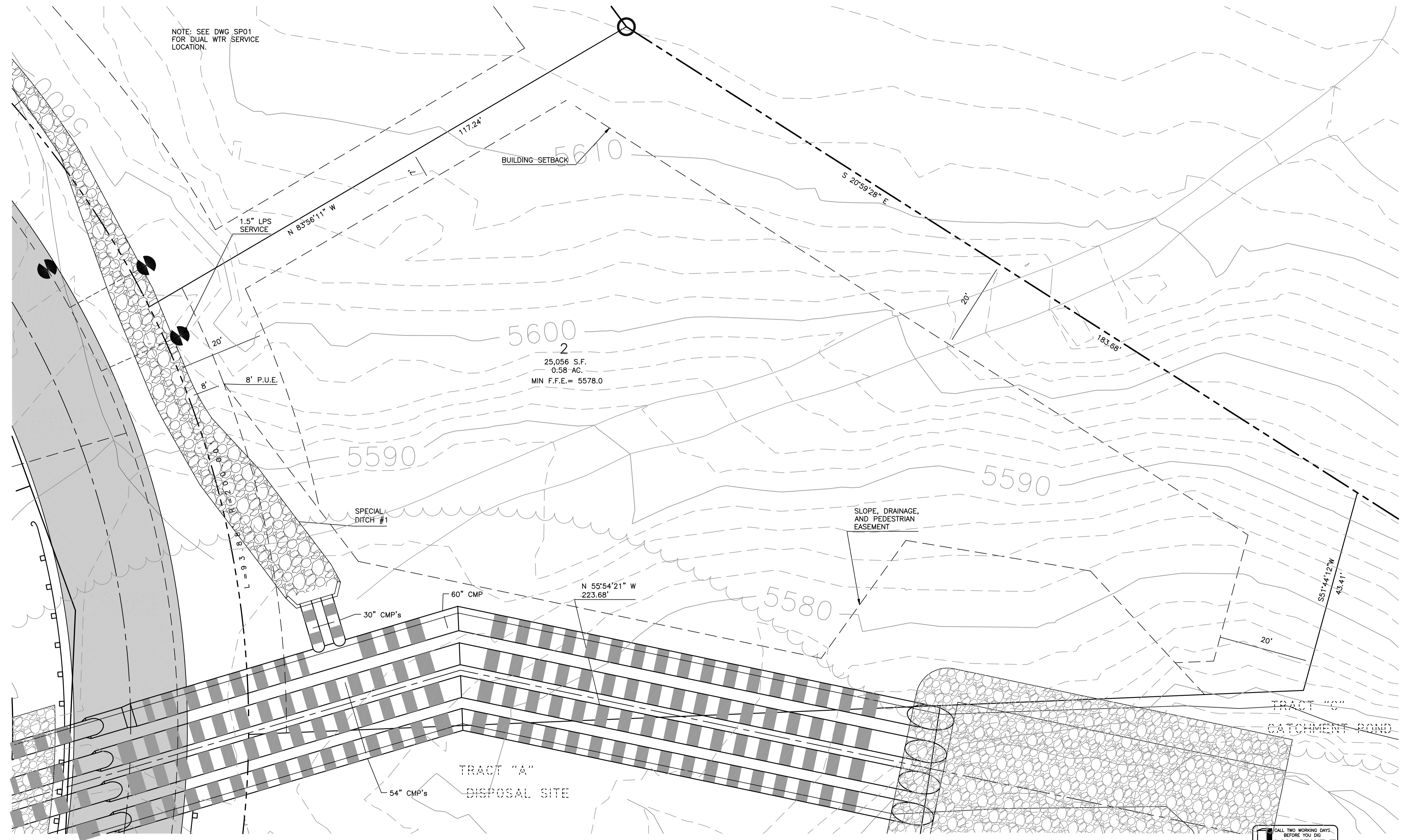
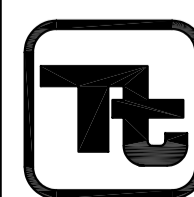


NOTE: SEE DWG SP01  
FOR DUAL WTR SERVICE  
LOCATION.



NO.	REVISIONS	DATE	BY	CHK.



**TETRA TECH, INC.**  
INFRASTRUCTURE SOUTHWEST GROUP  
431 S. Beeline Highway, Payson, AZ 85541  
(520) 474-4636 FAX (520) 474-4867

# STRAWBERRY HOLLOW

PINE, ARIZONA

JOB NO.	2577.0001
DESIGNED BY:	ROB
DRAWN BY:	PMV
CHECKED BY:	ROB
APPROVED BY:	ROB
DATE:	08/15/02

## LOT 2 SITE PLAN

SCALE:	HORIZ: 1" = 10'
	CONT. INTERVAL = 2'
DRAWING NO.	<b>SP2</b>
SHEET NO.	OF:
<b>1</b>	<b>1</b>

LSP-2