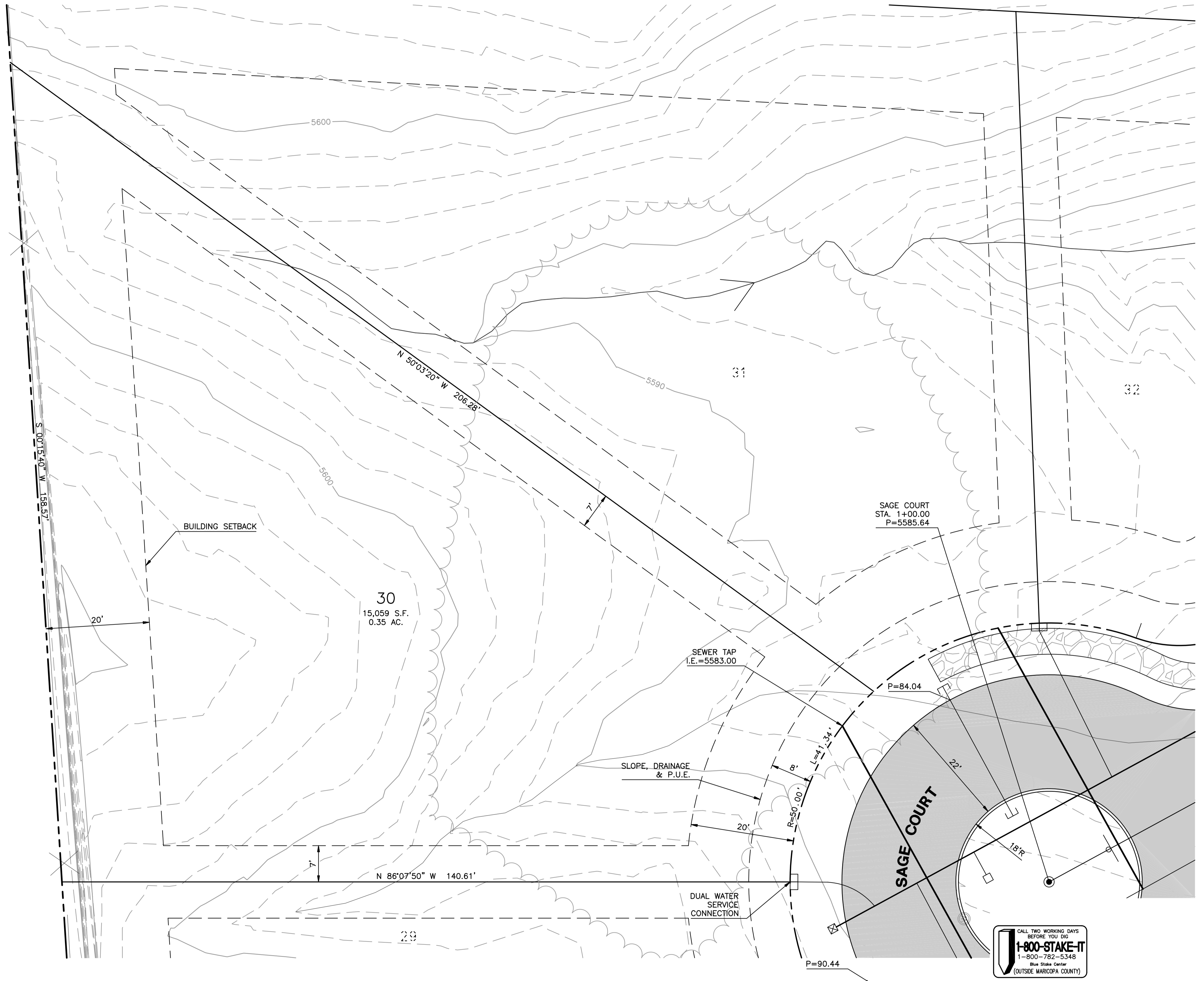
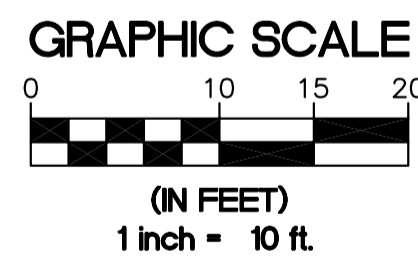
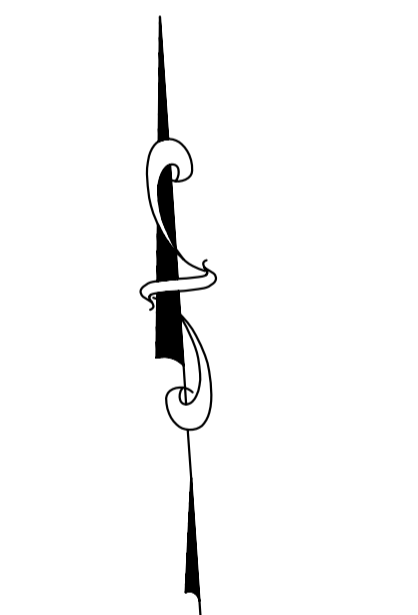
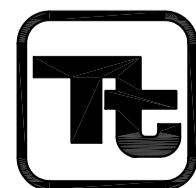


TONTO NATIONAL FOREST



NO.	REVISIONS	DATE	BY	CHK.



TETRA TECH, INC.
 INFRASTRUCTURE SOUTHWEST GROUP
 431 S. Beeline Highway, Payson, AZ 85541
 (928) 474-4636 FAX (928) 474-4867

STRAWBERRY HOLLOW

PINE, ARIZONA

JOB NO.	2577.0001
DESIGNED BY:	ROB
DRAWN BY:	KWD
CHECKED BY:	ROB
APPROVED BY:	ROB
DATE:	02/08/02

LOT 30 SITE PLAN

SCALE:	HORIZ: 1" = 10'
	CONT. INTERVAL = 2'
DRAWING NO.	SP30
SHEET NO.	OF:
1	1